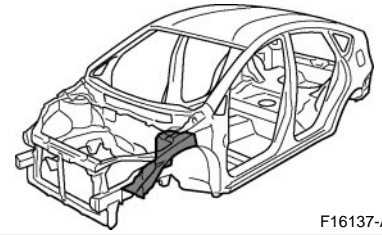


FRONT FENDER APPON (ASSY)

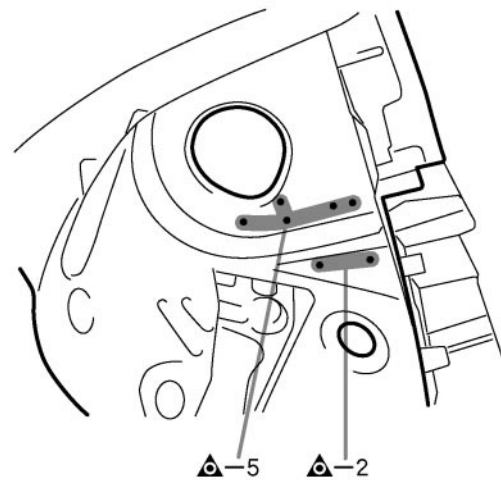
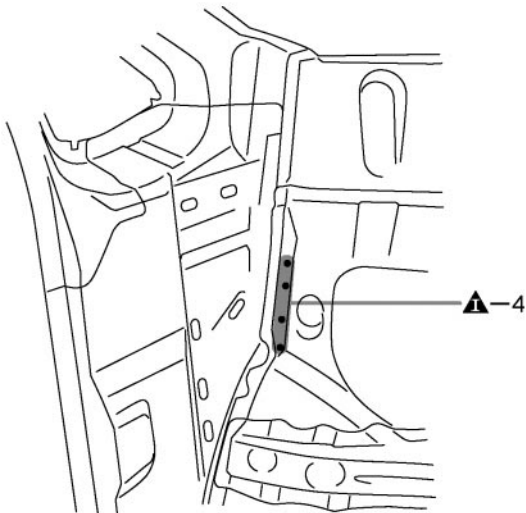
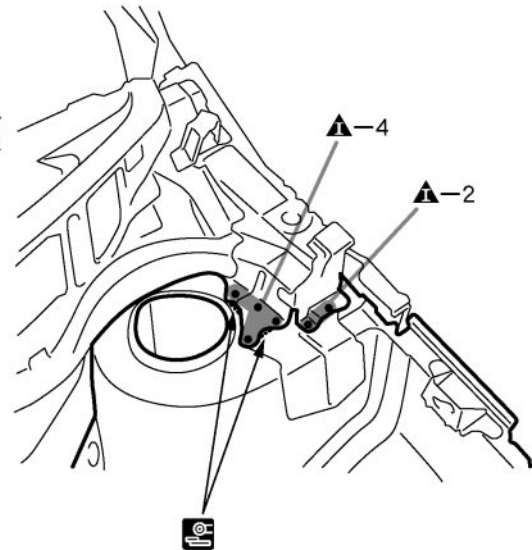
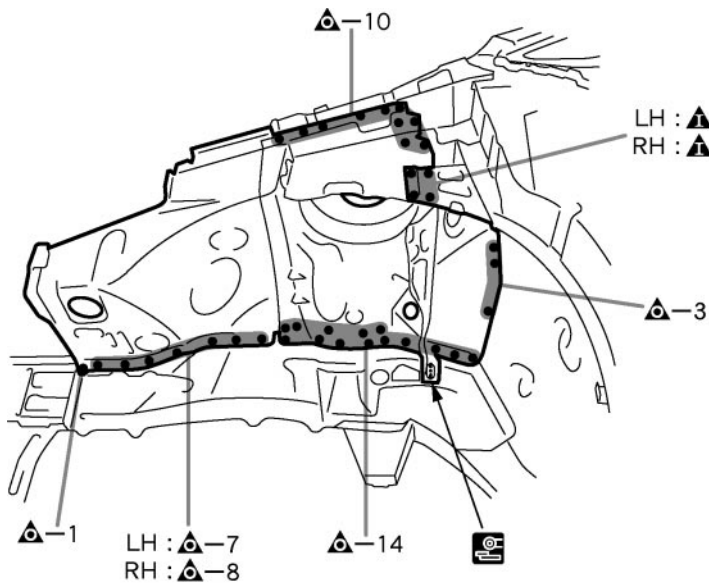
REPLACEMENT

With the radiator upper support and cowl top side panel removed.



F16137-A

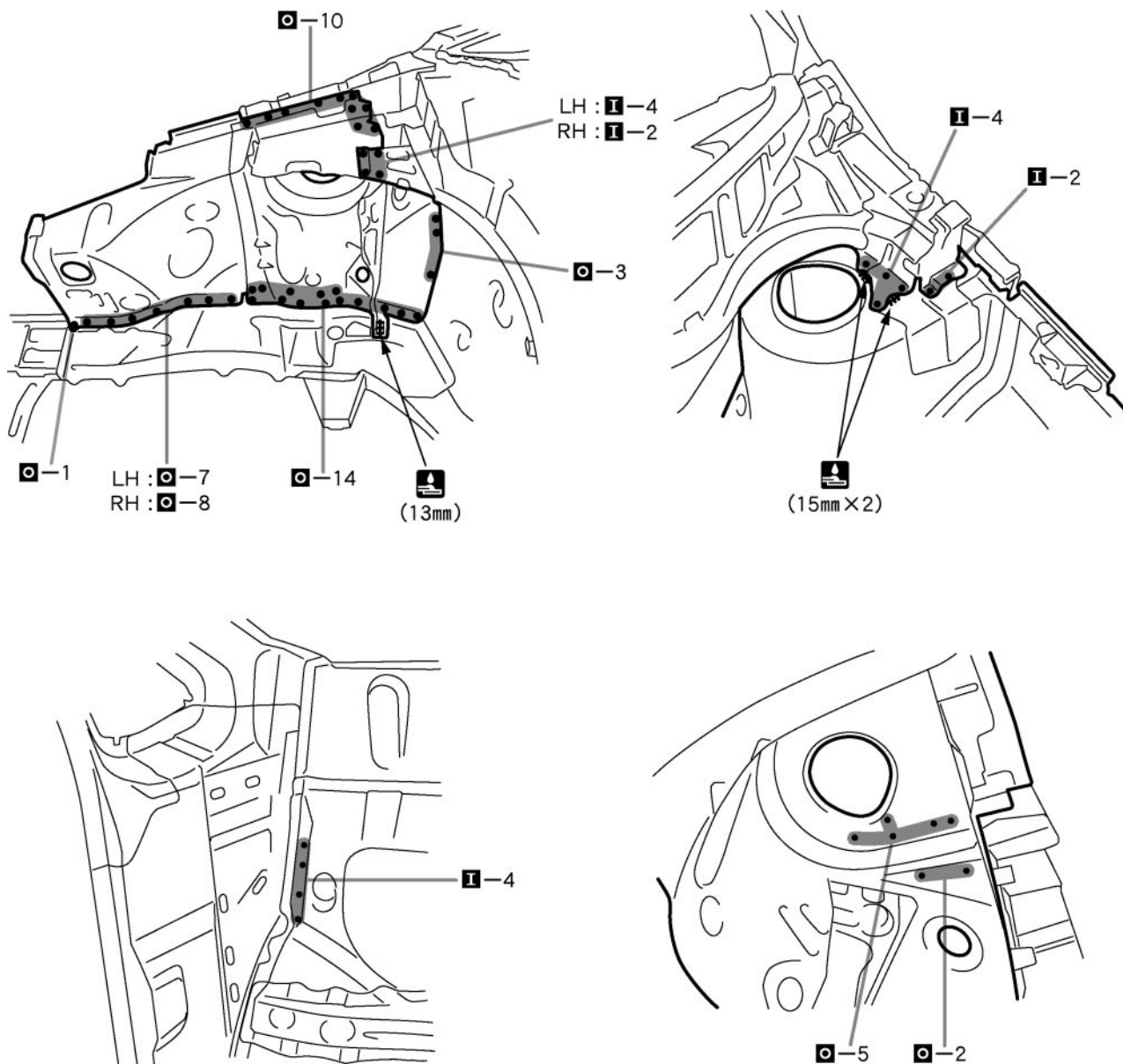
REMOVAL



F16137

INSTALLATION

- Temporarily install the new parts and measure each part of the new parts in accordance with the body dimension diagram. (See the body dimension diagram)
- Inspect the fitting of the related parts around the new parts before welding. This affects the appearance of the finish.
- After welding, apply the polyurethane foam to the corresponding parts.
- After welding, apply body sealer and under-coating to the corresponding parts.
- After applying the top coat layer, apply anti-rust agent to the inside of the necked section structural weld spots.



F16138

POINT

- 1 Make sure each measurement is correct, as this parts affects the front wheel alignment.
- 2 Inspect the fitting of the front fender and hood, etc., before welding, since this affects the appearance of the finish.

13mm (0.51in.)

15mm (0.59in.)